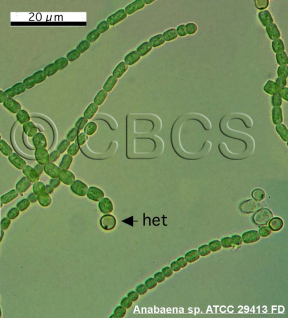


20 μ m



Anabaena cylindrica
ATCC 29414

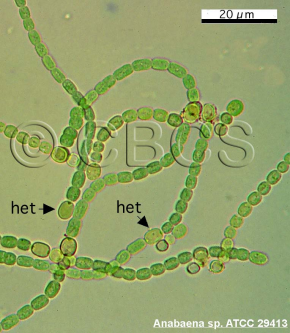
20 μm



← het

Anabaena sp. ATCC 29413 FD

20 μm



het →

het →

Anabaena sp. ATCC 29413

het



het



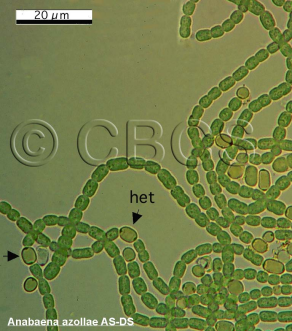
het



20 μm

Anabaena sp. ATCC 33047

20 μm



het

Anabaena azollae AS-DS

20 μ m



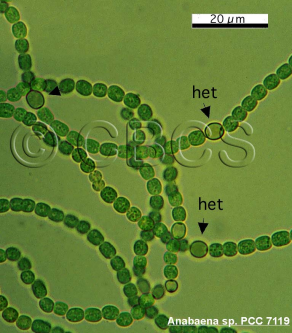
Anabaena sp. PCC 6411

20 μm

het

het

Anabaena sp. PCC 7119



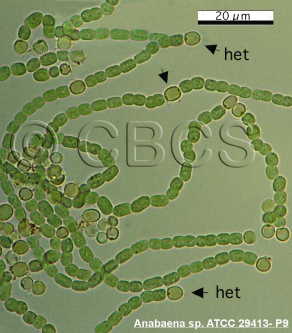
20 μm



20 μm



Anabaena Universidad Leningrado



20 μ m

het

het

Anabaena sp. ATCC 29413- P9

20 μm

© CBCS

Anacystis L-1402-1



20 μm

Calothrix sp. PCC 7601

20 μm

© CCBUS

Calothrix sp. PCC9327

20 μ m

© CBCS

Chlorogloeopsis sp. PCC 6912

50 μm

CCBBS

Chroococidiopsis sp. PCC 7203

20 μm

Chroococidiopsis sp. PCC9317

20 μm



Cyanosphaera sp. PCC 9318

20 μ m



Dermocarpa sp. PCC 7437



Fischerella muscicola UTEX 1829

20 μm

CCRCSS

Gloeocapsa sp. PCC9319

20 μm

Microcystis aeruginosa Humbolt 5.2.4.

20 μm

© C B C S

Microcystis aeruginosa N-44

20 μ m

het

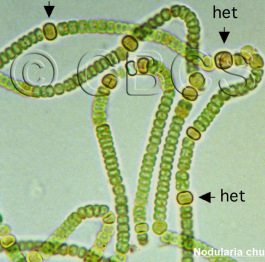


het



het

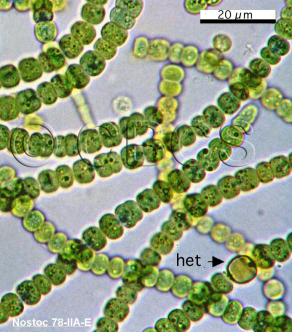
Nodularia chucula



20 μ m

het \blacktriangleright

Nostoc 78-IIA-E



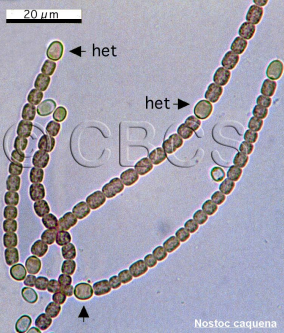
20 μm

← het

het →



Nostoc caquena



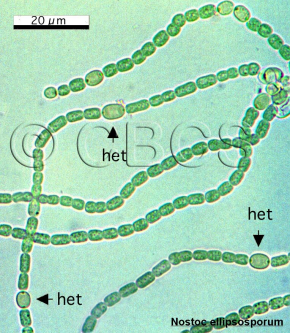
20 μm

het

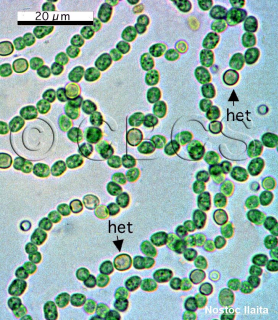
het

het

Nostoc ellipsosporum



20 μ m



het

het

Nostoc liaita

20 μ m

Nostoc sp. PCC 9331

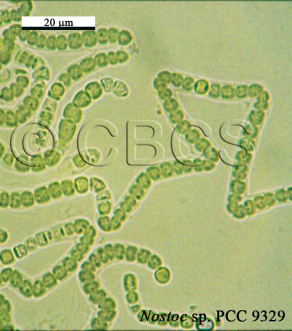




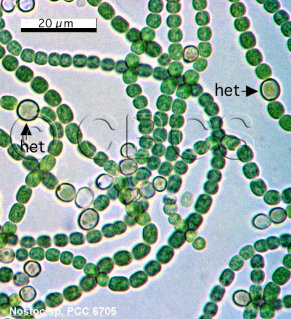
20 μm

Nostoc punctiforme ATCC 29133

20 μm



Nostoc sp. PCC 9329



20 μ m

het →

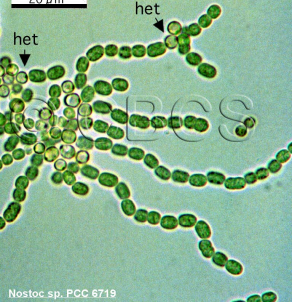
↑
het

Nostoc sp. PCC 6705

20 μm

het

het



Nostoc sp. PCC 6719

20 μ m

het



© CBCS

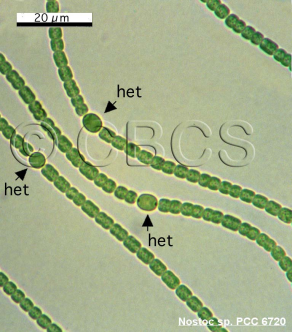
het



het



Nostoc sp. PCC 6720





het

het

het

20 μ m

Nostoc sp. PCC 7107

20 μ m

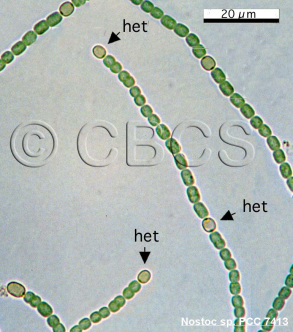
het

het

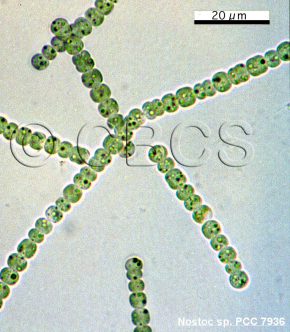
het

Nostoc sp. PCC 7413

© CBCS



20 μ m



Nostoc sp. PCC 7936

20 μm



Nostoc sp. PCC 9201

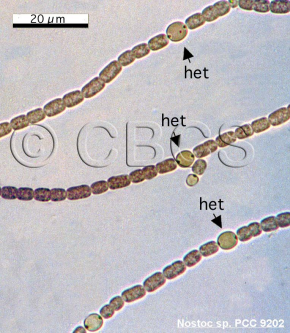
20 μm

het

het

het

Nostoc sp. PCC 9202



20 μ m

← het

het

Nostoc sp. PCC 9203

20 μm

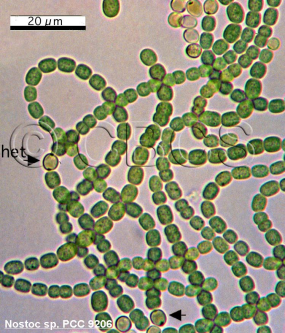


het

het

Nostoc sp. PCC 9204

20 μm



het

Nostoc sp. PCC 9206

20 μm

© CBS

Nostoc sp. PCC 9329



20 μm

Pleurocapsa sp. PCC 7327

20 μ m



Pseudanabaena sp. PCC 6903

20 μ m

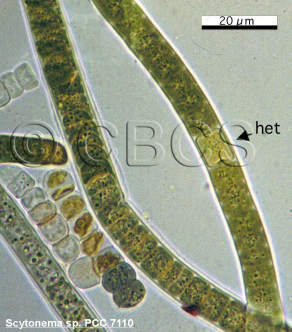
© C D C S

Pseudanabaena sp. PCC 9330

20 μ m

het

Scytonema sp. PCC 7110

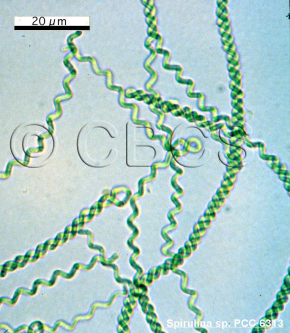




20 μm

Scytonema sp. PCC 7110

20 μm



Spirulina sp. PCC 6313

20 μm

© C B C S

Synechococcus M-



20 μm

© CBCS

Synechococcus sp. PCC 6301

20 μm

© CBCS

Synechococcus sp. PCC 7202

20 μm

© CBCS

Synechococcus sp. PCC 7942

20 μm

© C B C S

Synechococcus sp. PCC 7942

20 μm

© CBCS

Synechococcus sp. PCC 9321

20 μm

© CBICS

Synechococcus A6

20 μm

© C B C S

Synechocystis sp. PCC 6308

20 μ m

© CBCS

Synechocystis sp. PCC 6803

20 μm

© C B C S

Synechocystis sp. PCC 6803

20 μ m

CCES

Synechocystis sp. PCC 9320

A micrograph showing numerous green, oval-shaped cells of Synechocystis sp. PCC9322. The cells are arranged in various orientations and some are in small clusters. A scale bar in the top left corner indicates 20 micrometers. The text '© CBCS' is overlaid in the center, and the species name 'Synechocystis sp. PCC9322' is at the bottom.

20 μm

© CBCS

Synechocystis sp. PCC9322

20 μm

© CEBCS

Synechocystis sp. PCC 9323