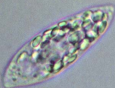


20 μm



CBCS



Astasia longa

20 μm



Chlamydomonas augustae

20 μm



Chlamydomonas euryale

20 μm



Chlamydomonas reinhardtii 137C

20 μm

© CBS

Chlamydomonas reinhardtii 21gr

20 μm

© CBCS

Chlamydomonas reinhardtii CC124

20 μm

© CC BY NC

Chlamydomonas reinhardtii CC621

20 μm

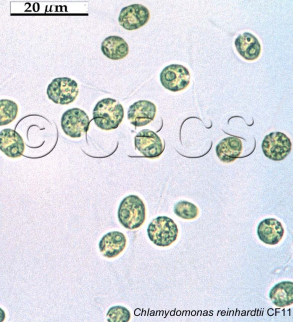


© CBCS



Chlamydomonas reinhardtii CF10

20 μm



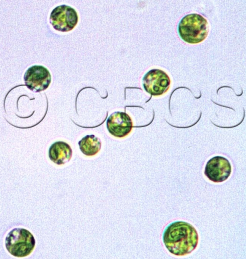
Chlamydomonas reinhardtii CF11

20 μm



Chlamydomonas reinhardtii CF14

20 μm



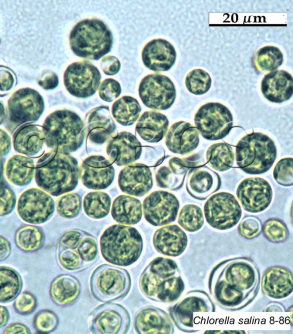
Chlamydomonas reinhardtii CW15

20 μm



Chlorella fusca

20 μm



Chlorella salina 8-86

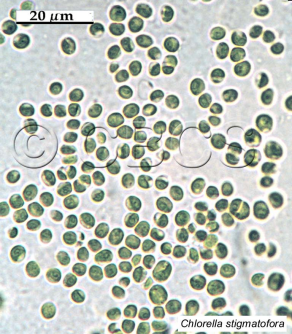
20 μm

© CBCS

Chlorella sorokiniana



20 μm



Chlorella stigmatofora

20 μm

© CBCS

Chlorella zoofingiensis

20 μm

© CBCS

Chlorella vulgaris 9-88

A light micrograph showing numerous green, oval-shaped cells of Chlorococcum citrifforme. The cells are densely packed and exhibit various internal structures, including prominent chloroplasts and some with visible flagella. A scale bar in the top right corner indicates 20 micrometers. The text 'Chlorococcum citrifforme' is overlaid in the bottom right corner.

20 μm

Chlorococcum citrifforme

20 μm

Coccolastrum proboscideum var. *dilatatum*

20 μ m



Coelastrum proboscideum var. *gracile*

20 μm

© CBCS

Cyanophora paradoxa

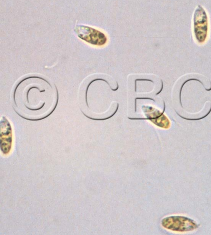
20 μm

© CBCS



Dunaliella salina CCAP 19-30

20 μm



Dunaliella salina Gata

20 μm

© CBCS

Dunaliella salina PM-1

20 μm

© CBCS

Dunaliella salina PM-2

20 μm



Dunaliella salina R1

20 μm



Dunaliella salina Roquetas

20 μm



Dunaliella salina UTEX 2538

20 μm

© CBCS

Dunaliella salina viridis

20 μm



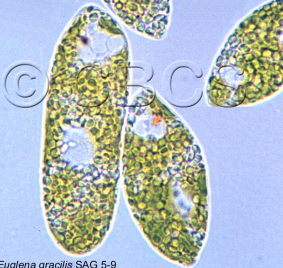
Euglena gracilis SAG 5-15



Euglena gracilis SAG 5-25

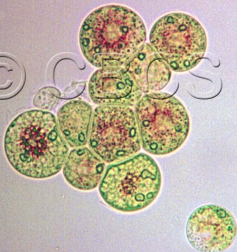
20 μm

20 μm



Euglena gracilis SAG 5-9

50 μm



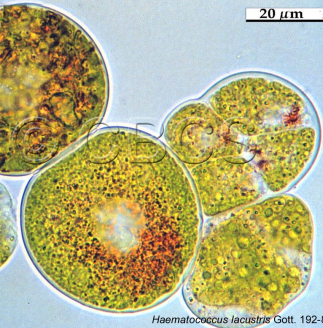
Haematococcus lacustris ATCC 30453

20 μm



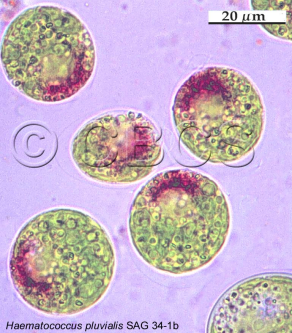
Haematococcus lacustris ATCC 30453

20 μ m



Haematococcus lacustris Gott. 192-80

20 μ m



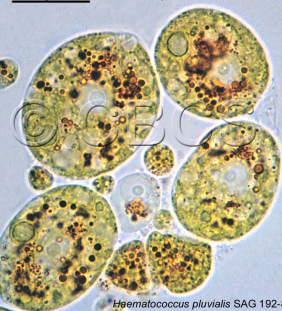
Haematococcus pluvialis SAG 34-1b

50 μm



Haematococcus pluvialis SAG 192-80

20 μm



Haematococcus pluvialis SAG 192-80

20 μm

© CBCS

Monoraphidium braunii

10 μ m

© C B C S

Monoraphidium circinale

20 μm

CBCS

Muriellopsis sp.

20 μm

© CBCS

Nannochloris gaditana

20 μm

© CBCS

Nannochloris oculata

20 μm



Nannochloris salina

20 μm

©_CBCS

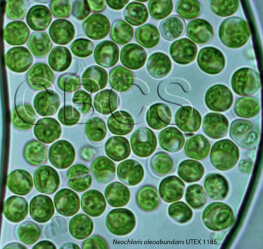
Navicula pelliculosa 1050-3

A micrograph showing numerous green, spherical cells of Neochloris oleoabundans UTEX 1185. The cells are scattered across the field of view, with some appearing in small clusters. The background is a light, slightly hazy green. The text '© CBCS' is overlaid in the center, and 'UTEX 1185' is in the bottom right corner.

© CBCS

Neochloris oleoabundans UTEX 1185

5 μ m



Neochloris oleoabundans UTEX 1185

20 μm



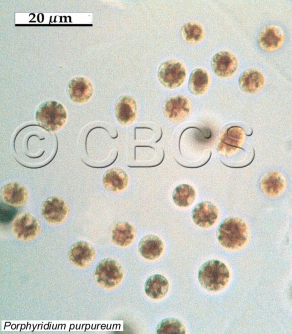
Neosporangium gelatinosum

20 μm



Ochromonas danica

20 μm



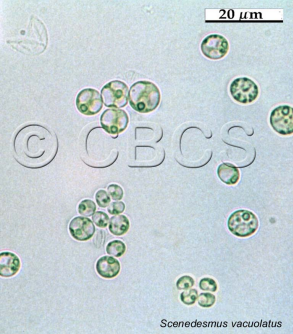
Porphyridium purpureum

20 μm



Rhodomonas salina

20 μm

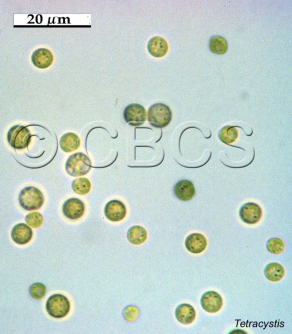


Scenedesmus vacuolatus

20 μm

CBCS

Tetracystis



20 μ m



Tetraselmis chuii